

ORION-2

style without compromise

3
MODELS



Model illustrated is the Orion-2 35 x 12/2 bedroom.



01482 562101 | www.atlasleisurehomes.co.uk

ORION-2

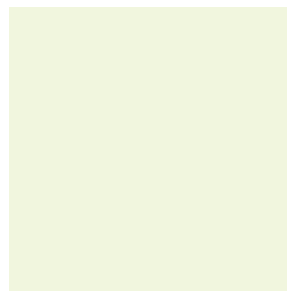
style without compromise

The Orion-2 benefits from a spacious open plan living area with ample seating, perfect for relaxing or entertaining.

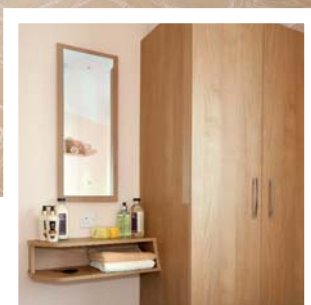
This contemporary holiday home features a stylish lounge with co-ordinating soft furnishings in a warm and practical colour scheme.

The kitchen has two-colour cabinetwork and an integrated oven and hob. The Orion-2 is available in both two and three bedroom layouts.

This lovely holiday home offers exceptional value without compromising on style.



Bedrooms with ample storage and attractive colour scheme





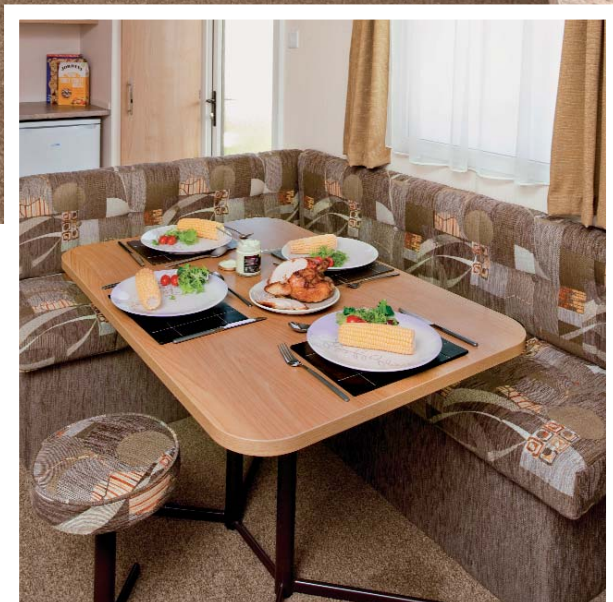
Stylish holiday home for all the family



The kitchen boasts attractive two-colour cabinetwork



TV, DVD Player and all other ornaments are for display only.



Contemporary holiday home, with stylish lounge and modern gas fire



STANDARD SPECIFICATION

features included as standard in each model

EXTERIOR

- Plastisol coated steel pantile pitched roof
- Under floor insulation
- Lagged hot and cold water exterior pipework

INTERIOR

- Vaulted ceilings throughout
- Flush internal doors
- Energy efficient lighting
- Carbon Monoxide detector, smoke alarm and fire extinguisher

LOUNGE

- Fold-out sprung bed to lounge seating
- Contemporary gas fire
- Fully lined curtains
- Net curtains

KITCHEN

- Integrated 600 wide oven and 4 ring hob with electronic ignition, incorporating grill
- Venetian blind

DINING AREA

- Dinette style dining area
- Freestanding dining table

BEDROOMS

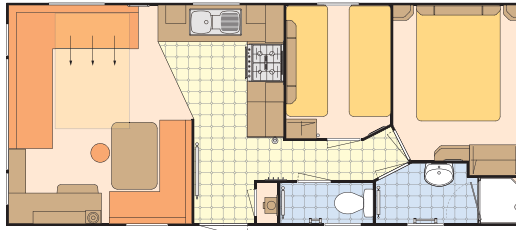
- Freestanding metal bed frames with interior sprung mattresses
- Twin beds combine to make a double bed if required
- Fully lined curtains
- Net curtains

BATHROOMS & WC

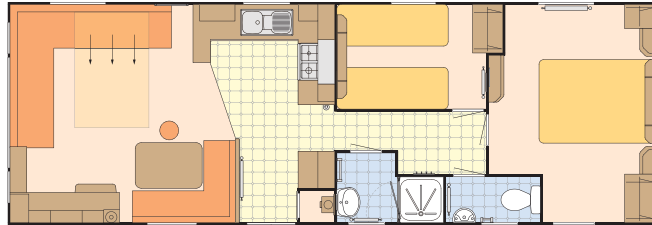
- Thermostatic shower mixer
- Venetian blind/s

LAYOUT PLANS

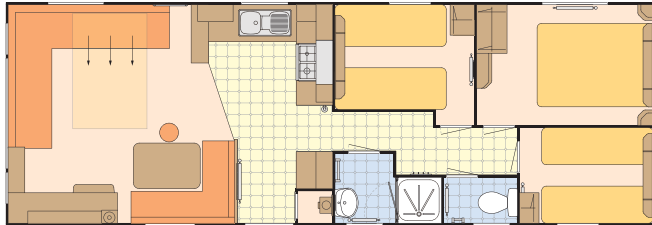
model interior layouts



28 x 12 / 2 bedrooms - 6 berth



35 x 12 / 2 bedrooms - 6 berth



35 x 12 / 3 bedrooms - 8 berth

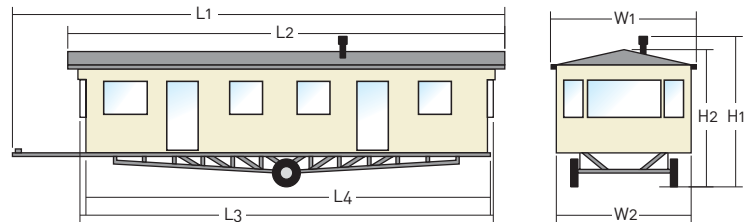
OPTIONS AVAILABLE

model interior layouts

- Gas combi central heating with thermostatic radiator valves
- Double glazed PVCu exterior door and windows
- Electric plinth heaters and heated towel rail(s)
- Extra insulation
- Fridge or fridge freezer

EXTERNAL DIMENSIONS

dimensions for each model in the range



MODELS	L1	L2	L3	L4	W1	W2	H1	H2
28 x 12/2	9.700m (31' 10")	8.920m (29' 3 1/4")	8.557m (28' 1")	8.310m (27' 3 1/4")	3.860m (12' 8")	3.680m (12' 1")	3.330m (10' 11")	3.330m (10' 11")
35 x 12/2	11.830m (38' 9 3/4")	11.053m (36' 3 1/4")	10.690m (35' 3/4")	10.443m (34' 3 1/4")	3.860m (12' 8")	3.680m (12' 1")	3.330m (10' 11")	3.330m (10' 11")
35 x 12/3	11.830m (38' 9 3/4")	11.053m (36' 3 1/4")	10.690m (35' 3/4")	10.443m (34' 3 1/4")	3.860m (12' 8")	3.680m (12' 1")	3.330m (10' 11")	3.330m (10' 11")

Atlas reserves the right to change any materials, fittings, etc., shown in this brochure at any time and without prior notice as supply or product development demand. All Atlas Leisure Homes are built to comply with all relevant British Standards and Codes of Practice as required by the National Caravan Council certification scheme.

NOTE: Caravan Holiday Homes are not designed for residential occupancy. To use an Atlas Leisure Home, it will need to be correctly sited, have steps or other means of entry and be connected to services (an appropriate propane gas supply, mains electricity to suit the required power offtake, mains water at a pressure to suit the appliances and a waste water/sewage outlet). Due to the nature of our construction methods and practices, it may not always be possible to match patterns precisely on some wallboards and fabrics. Any Park Operator, anywhere in the UK, can purchase an Atlas Leisure Home for you through the Atlas Dealer/Park Distribution Network. Due to the limitation of the print process we recommend that you see the actual products for colours. Photographs of Atlas Leisure Homes on location are for example only and may not have been sited at that location.

Decking, patios, fences, barbecues, etc. have been used for illustrative purposes only. E&OE

