

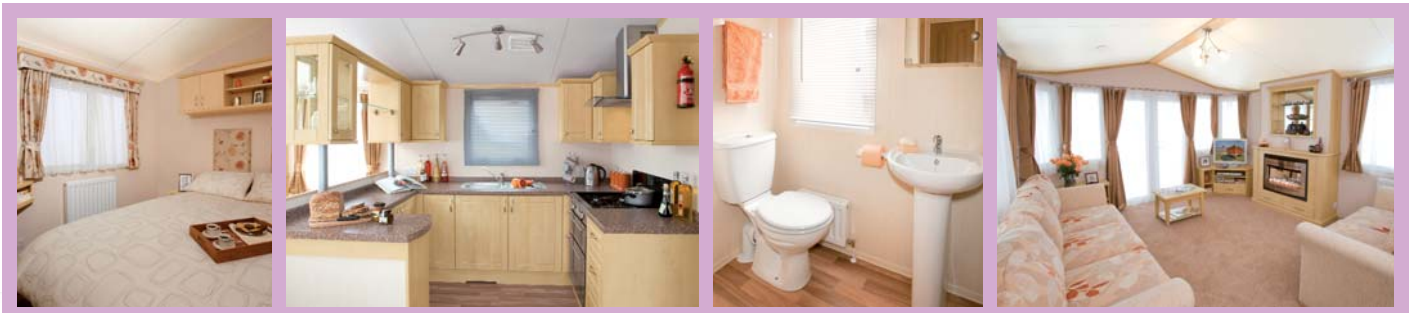
CAPRICORN-2

unforgettable family holidays

4
MODELS



Model illustrated is the Capricorn-2 36 x 12/2 bedroom "FD" (French Doors).



01482 562101 | www.atlasleisurehomes.co.uk

CAPRICORN-2

unforgettable family holidays

This charming holiday home is well furnished with contemporary and stylish décor throughout.

A welcoming and spacious lounge features two and three-seater fixed sofas, carefully positioned to take advantage of the views from the large, panoramic front windows.

The dining area boasts a freestanding dining table and upholstered chairs and a modern, fitted kitchen with a stylish arched glass and stainless steel cooker hood above the hob.

The Capricorn-2 is everything you could want and more for all those who wish to create memorable holidays.



Spacious lounge with large, panoramic front windows





For years of memorable family holidays



Well furnished home with contemporary décor throughout



Modern kitchen, stylish arched glass and stainless steel cooker hood



TV, DVD Player and all other ornaments are for display only.

STANDARD SPECIFICATION

features included as standard in each model

EXTERIOR

- Plastisol coated steel pantile pitched roof
- Lagged hot and cold water exterior pipework
- Under floor insulation
- Exterior light
- Colour co-ordinated downpipes

INTERIOR

- Vaulted ceilings throughout
- Underlay fitted beneath all carpets
- Flush internal doors
- Energy efficient lighting
- Carbon Monoxide detector, smoke alarm and fire extinguisher

LOUNGE

- Panoramic windows
- Forward facing seating
- Fold-out sprung bed to lounge seating
- Contemporary pebble effect electric fire
- Coffee table
- Net curtains and fully lined curtains

KITCHEN

- Integrated 600 wide oven and 4 ring hob with electronic ignition, incorporating grill
- Integrated fridge freezer
- Glass and stainless steel recirculating hood above hob
- Venetian blind

DINING AREA

- Freestanding dining table and upholstered chairs

BEDROOMS

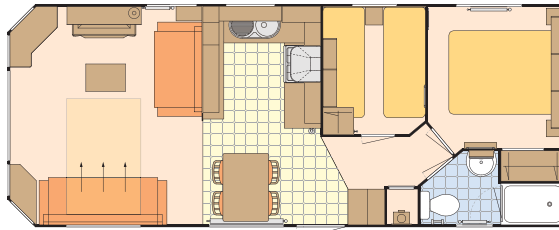
- Freestanding metal bed frames with interior sprung mattresses
- Twin beds combine to make a double bed if required (where applicable)
- Fully lined curtains and net curtains

BATHROOMS

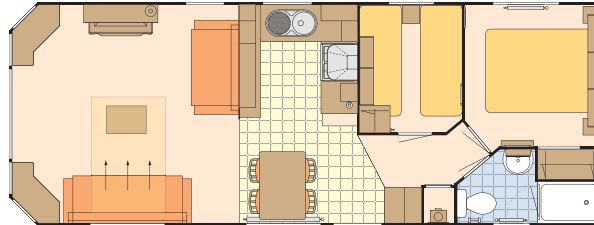
- Thermostatic shower mixer
- Venetian blinds
- Extractor fan (main bathroom)

LAYOUT PLANS

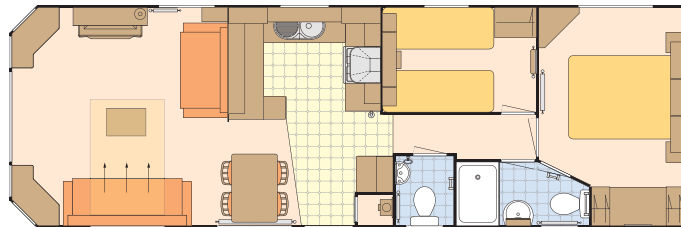
model interior layouts



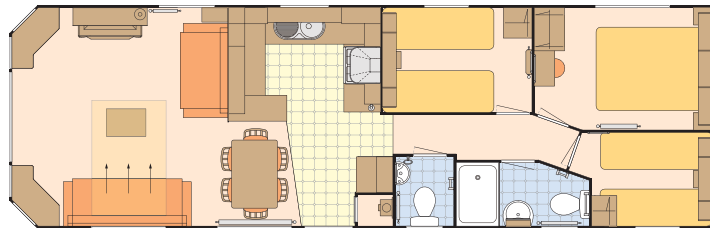
28 x 12 / 2 bedrooms - 6 berth



32 x 12 / 2 bedrooms - 6 berth



36 x 12 / 2 bedrooms - 6 berth



37 x 12 / 3 bedrooms - 8 berth

OPTIONS AVAILABLE

extra features available for your home

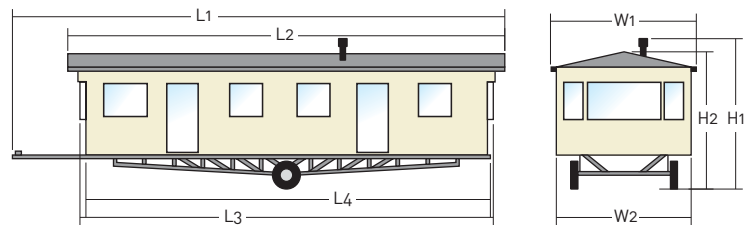
- Gas combi central heating with thermostatic radiator valves
- Double glazed PVCu front French doors
- Double glazed PVCu exterior door and windows
- Electric plinth heaters and heated towel rail(s)
- Extra insulation
- Environmental colours

Atlas reserves the right to change any materials, fittings, etc., shown in this brochure at any time and without prior notice as supply or product development demand. All Atlas Leisure Homes are built to comply with all relevant British Standards and Codes of Practice as required by the National Caravan Council certification scheme.

NOTE: Caravan Holiday Homes are not designed for residential occupancy. To use an Atlas Leisure Home, it will need to be correctly sited, have steps or other means of entry and be connected to services (an appropriate propane gas supply, mains electricity to suit the required power offtake, mains water at a pressure to suit the appliances and a waste water/sewage outlet). Due to the nature of our construction methods and practices, it may not always be possible to match patterns precisely on some wallboards and fabrics. Any Park Operator, anywhere in the UK, can purchase an Atlas Leisure Home for you through the Atlas Dealer/Park Distribution Network. Due to the limitation of the print process we recommend that you see the actual products for colours. Photographs of Atlas Leisure Homes on location are for example only and may not have been sited at that location. Decking, patios, fences, barbecues, etc. have been used for illustrative purposes only. E&OE

EXTERNAL DIMENSIONS

dimensions for each model in the range



MODELS	L1	L2	L3	L4	W1	W2	H1	H2
28 x 12/2	10.339m (32' 11")	9.518m (31' 2 1/2")	9.208m (30' 2 1/2")	8.757m (28' 8 3/4")	3.860m (12' 8")	3.680m (12' 1")	3.390m (11' 1 1/2")	3.390m (11' 1 1/2")
32 x 12/2	10.907m (35' 9 1/2")	10.086m (33' 1")	9.776m (32' 1")	9.325m (30' 7 1/4")	3.860m (12' 8")	3.680m (12' 1")	3.390m (11' 1 1/2")	3.390m (11' 1 1/2")
36 x 12/2	12.321m (40' 5")	11.504m (37' 9")	11.142m (36' 6 3/4")	10.691m (35' 1")	3.860m (12' 8")	3.680m (12' 1")	3.390m (11' 1 1/2")	3.390m (11' 1 1/2")
37 x 12/3	12.749m (41' 10")	11.906m (39' 3/4")	11.596m (38' 1/2")	11.145m (36' 6 3/4")	3.860m (12' 8")	3.680m (12' 1")	3.390m (11' 1 1/2")	3.390m (11' 1 1/2")